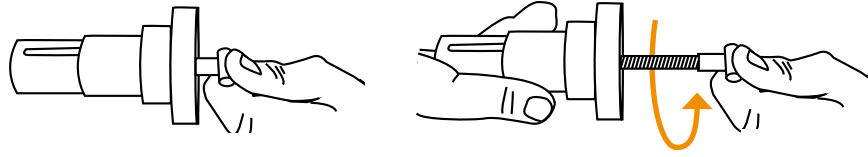
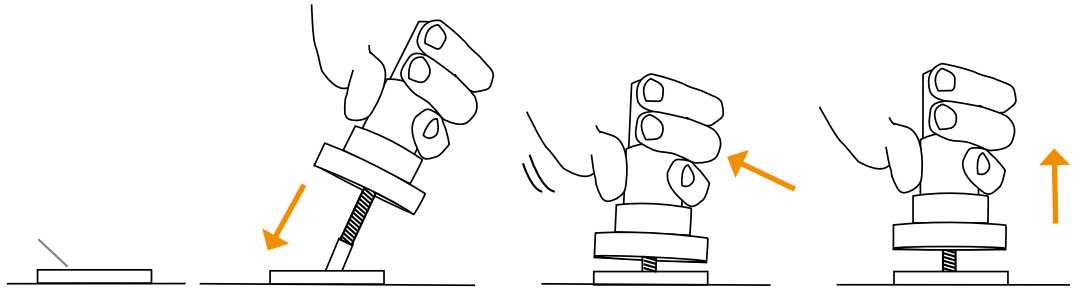




# Tallon™ Scotty Mount Installation



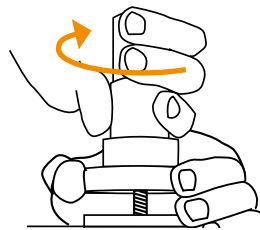
Unscrew the connector until thread is fully extended from the Scotty Mount



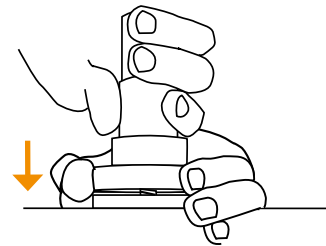
Insert connector into the Socket

Level

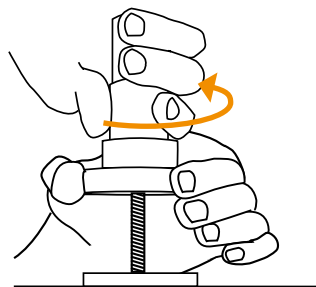
Pull out to lock



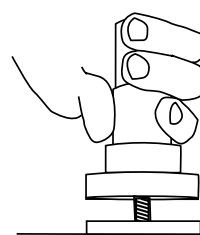
Hold base of the Scotty Mount firmly and turn barrel clockwise



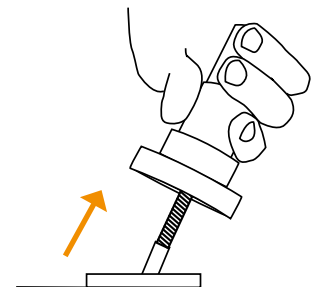
When firmly tightened against faceplate it is ready to use



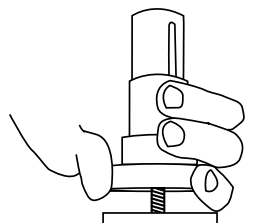
To remove, hold base of Scotty Mount firmly and twist barrel until connector thread is fully extended



Push in to unlock



Remove at angle



Do not tighten or unscrew the the Scotty Mount by turning the base as this could result in damage to your faceplate or Socket